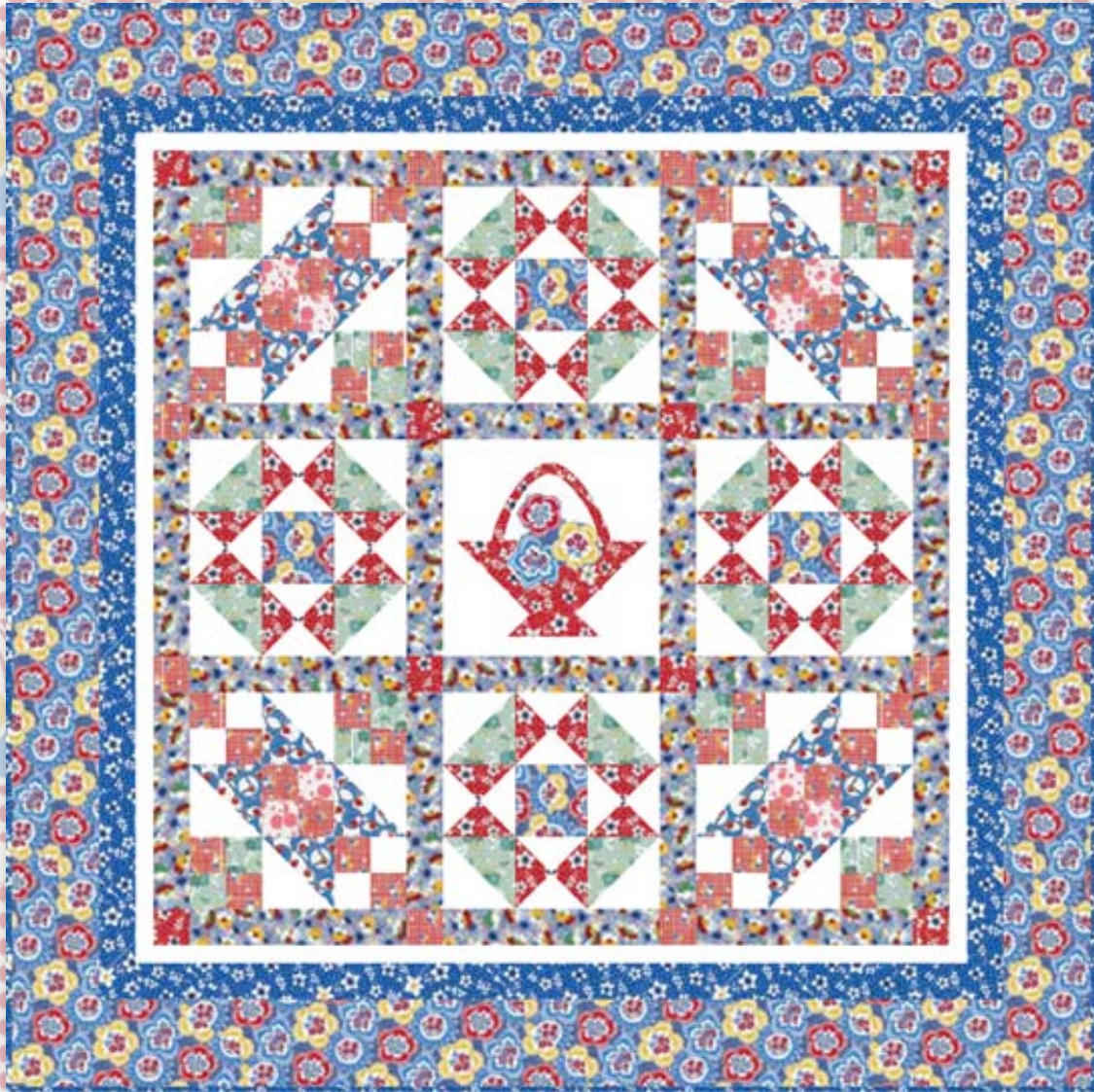


# Momma's Favorites

by Karen Stephens



Quilt designed by Jean Ann Wright

Finished size: 80" x 80"

*Featuring the*  
**Momma's Favorites**  
**Collection**  
by Karen Stephens



**makower uk**<sup>®</sup>

1384 Broadway • New York, NY 10018  
(800) 223-5678 • [www.andoverfabrics.com](http://www.andoverfabrics.com)

# Momma's Favorites Quilt

Introducing Andover Fabrics new collection: Momma's Favorites by Karen Stephens

Quilt designed by Jean Ann Wright

Reproduction feedsack prints and traditional block designs go hand in hand in this large wall quilt. Fusing the center basket filled with cheery fussy-cut flowers makes a quick yet engaging project.

Quilt Finishes 62" x 62"  
8 Pieced Blocks: 12" x 12"  
1 Applique Block: 12" x 12"

## Fabric Requirements & Cutting Directions

- 4986-B** 1½ yards Large Blue Floral (blocks, appliqué and borders)  
Cut (4) 4½" x 4½" squares  
Cut (2) 6½" x 50½" strips cut crosswise and pieced for outside border  
Cut (2) 6½" x 62½" strips cut crosswise and pieced for outside borders  
Cut (1) Fussy-cut flower cluster as per instructions
- 4987-B** ⅞ yard Multicolor Small Floral (sashing)  
Cut (24) 2½" x 12½" sashing strips
- 4988-B** ¼ yard Red/White/Blue Print (blocks)  
Cut (8) 4⅞" x 4⅞" squares
- 4989-G** ⅓ yard Green Floral (blocks)  
Cut (16) 2½" x 2½" squares  
Cut (8) 4⅞" 4⅞" squares
- 4990-B** 1 yard Blue/White Floral (borders and binding)  
Cut (2) 2½" x 46½" strips cut crosswise and pieced for middle border  
Cut (2) 2½" x 50½" strips cut crosswise and pieced for middle border  
Cut (7) 2½" x fabric width strips for binding
- 4990-R** ⅝ yard Red/White Floral (blocks and basket)  
Cut (8) 5¼" x 5¼" squares  
Cut (8) 2½" x 2½" squares  
Cut (1) Basket appliqué piece using pattern as per instructions
- 4991-R** ⅓ yard Red Balloon Print (blocks)  
Cut (48) 2½" x 2½" squares
- \*\*4992-E** ⅛ yard Pink/White Bubbles (blocks)  
Cut (8) 2½" x 2½" squares
- 1867-WW** 1⅛ yards White Dimples (blocks and borders)  
Cut (1) 12½" x 12½" square  
Cut (8) 5¼" x 5¼" squares  
Cut (16) 4⅞" x 4⅞" squares  
Cut (2) 1½" x 44½" strips cut crosswise and pieced for first border  
Cut (2) 1½" x 46½" strips cut crosswise and pieced for first border  
Cut (16) 2½" x 2½" squares

½ yard 18"-wide fusible web

\*\* Additional fabric required for backing.

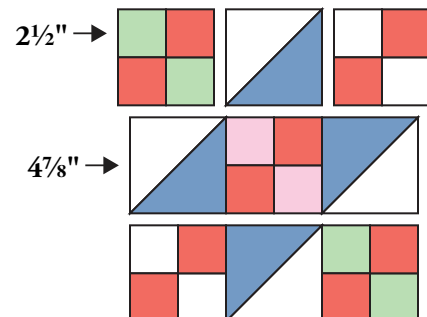
**\*\*4992-E- 4 yards (backing)**

Cut and piece to fit quilt top with 4" overlap on all sides.

## Making the Jacob's Ladder Blocks

**Note:** Refer to the Jacob's Ladder block diagram for the following steps.

1. Cut each red/white/blue and 8 white dimples 4⅞" squares in half on 1 diagonal to make a total of 16 triangles each fabric. Sew a white triangle to a red/white/blue triangle on the diagonal to make a total of 16 blue/white pairs. Press seam allowances toward the red/blue/white triangles.
2. Sew a green floral 2½" square to a red balloon print 2½" square; repeat to make a total of 16 red/green pairs. Press seam allowances toward darker square. Join 2 pairs to make a 4-patch unit; press seam allowance to 1 side. Repeat to make a total of 8 red/green 4-patch units.
3. Repeat step 2 with red balloon print and white 2½" squares to make a total of 8 red/white 4-patch units and with red balloon print and pink bubble 2½" squares to make a total of 4 red/pink 4-patch units.
4. Join units in rows, pressing seam allowances toward the 4-patch units in each row. Join the rows to make 1 block, pressing seam allowances in 1 direction. Repeat to make a total of 4 blocks.



**Block Diagram**

# Momma's Favorites Quilt

## Making the Star Blocks

**Note:** Refer to the Star block diagrams for the following steps.

5. Cut the white dimples and the red/white floral  $5\frac{1}{4}$ " x  $5\frac{1}{4}$ " squares on both diagonals to make a total of 4 quarter/square triangles from each square. Sew a white triangle to a red triangle on the short sides. Press seam allowance toward the red triangle. Repeat to make 2 red/white units. Join the 2 units to make a side unit. Press seam allowance to 1 side. (Diagram 1) Repeat to make a total of 16 side units.
6. Cut the remaining 8 white dimples and each green floral  $4\frac{7}{8}$ " square in half on 1 diagonal to make a total of 16 each white and green triangles. Sew a white triangle to a green triangle on the diagonal to make a total of 16 green/white pairs. (Diagram 2) Press seam allowances toward the green triangles.
7. Join units in rows with the  $4\frac{1}{2}$ " large blue floral square, pressing seam allowances toward the green/white units and the  $4\frac{1}{2}$ " square. Join the rows to make 1 block, pressing seams in 1 direction. Repeat to make a total of 4 blocks.

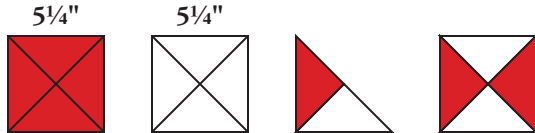


Diagram 1

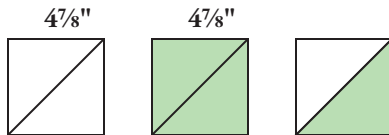
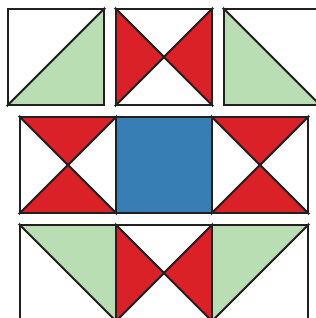


Diagram 2

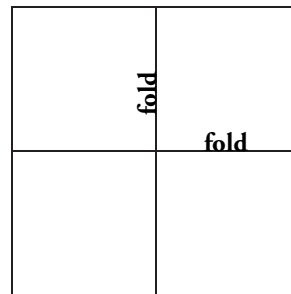


Star Block

## Making the Basket Block

**Note:** Refer to the Basket block diagram for the following steps.

8. Trace the basket pattern onto the paper side of the fusible web. Cut out, leaving  $\frac{1}{2}$ " around the shape. Fuse the paper shape to the wrong side of the red/white floral; cut out on traced lines. Remove paper backing. Iron fusible web to the wrong side of a flower cluster on the large blue floral. Cut out and remove paper backing.
9. Fold the  $12\frac{1}{2}$ " x  $12\frac{1}{2}$ " white dimples square in quarters and crease to mark vertical and horizontal centers. Fuse the basket on the white square using the creased lines as guides. Fuse the flower cluster on the basket. Stitch pieces in place as desired.



Basket Block

## Quilt Assembly

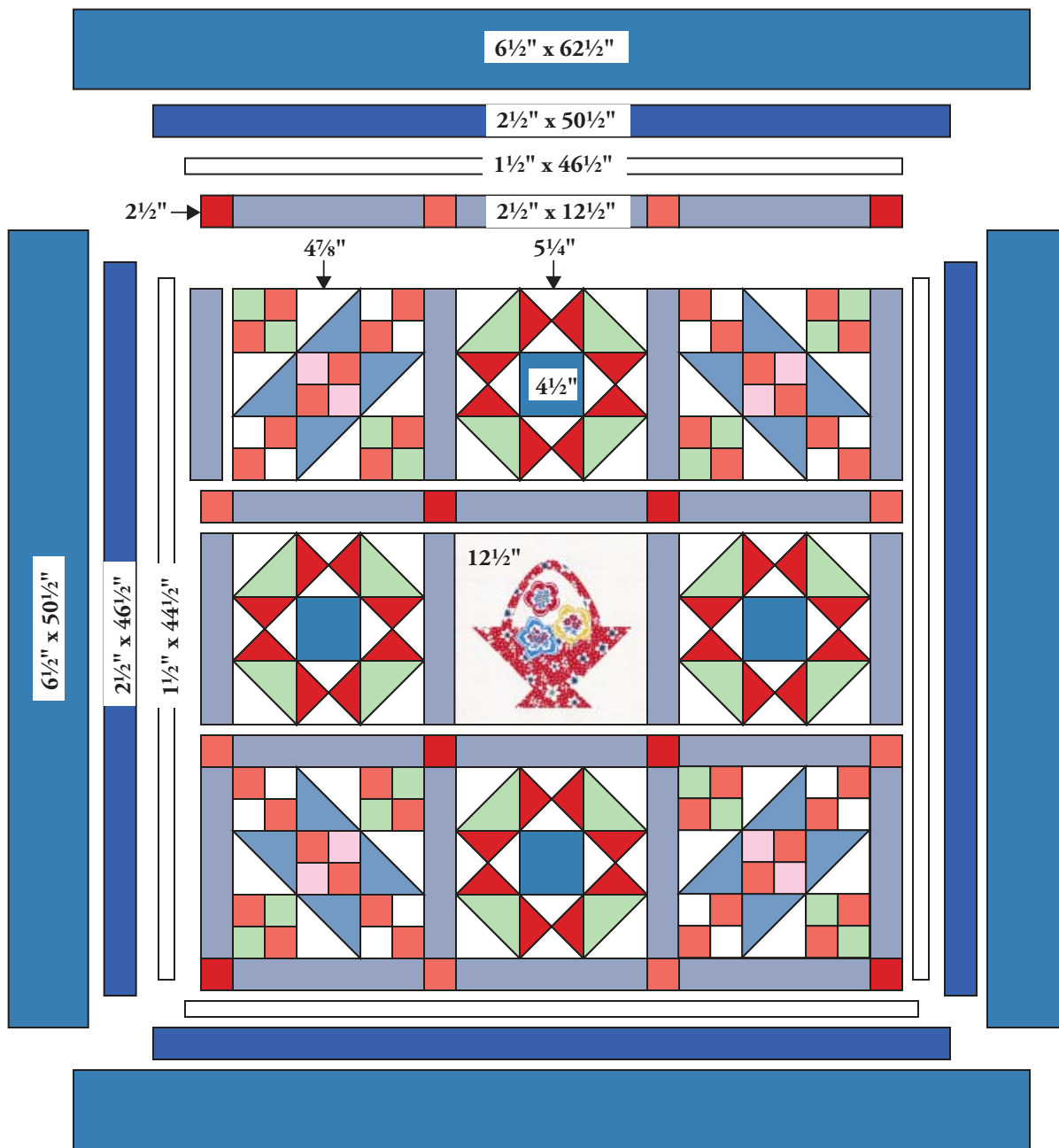
**Note:** Refer to the Quilt Diagram for the following steps.

10. Arrange and join blocks with the  $2\frac{1}{2}$ " x  $12\frac{1}{2}$ " sashing strips to make rows. Press seam allowances toward the sashing strips.
11. Arrange and join (3)  $2\frac{1}{2}$ " x  $12\frac{1}{2}$ " sashing strips with 2 red balloon print and 2 red/white floral  $2\frac{1}{2}$ " squares to make a sashing row. Press seam allowances toward the sashing strips. Repeat to make 4 sashing rows, being careful to place the squares correctly in each row.
12. Join the block rows with the sashing rows to make the pieced center. Press seam allowances toward the sashing rows.
13. Sew short white dimples border strips to the sides and the long strips to the top and bottom. Add blue/white floral borders and then large blue floral borders in the same order. Press all seam allowances toward the border strips.

## Finishing the Quilt

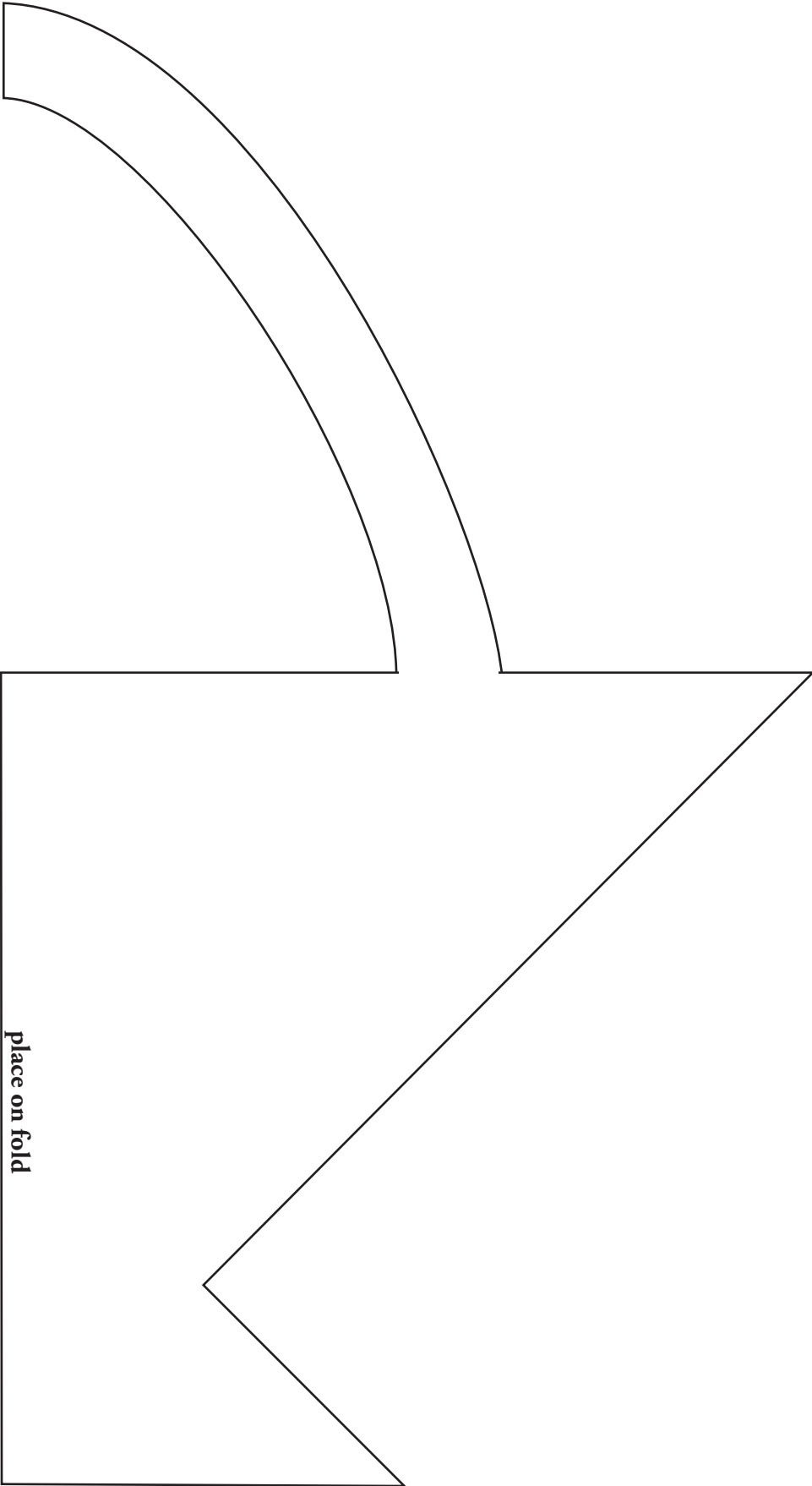
14. Layer quilt top with batting and backing. Quilt in the ditch of seams and as desired. Bind edges with blue/white floral strips to finish the quilt.

# Momma's Favorites Quilt



Quilt Diagram

**Full Size Pattern**



# Momma's Favorites

by Karen Stephens



makower uk®



4986-B



4987-B



4987-K



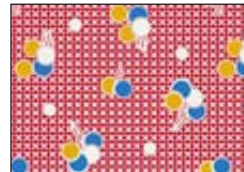
4990-B



4990-R



4988-B



4991-R



4992-E



1867-WW



1867-R1



1867-B1



1867-O7



1867-Y6



4986-N



4989-G



4989-P



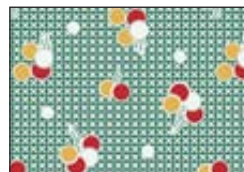
4990-O



4990-Y



4988-P



4991-G



4992-G



1867-WW



1867-P14



1867-T12



1867-N4



1867-O1

\*Indicates fabric used in quilt pattern. Fabrics shown are 30% of actual size.